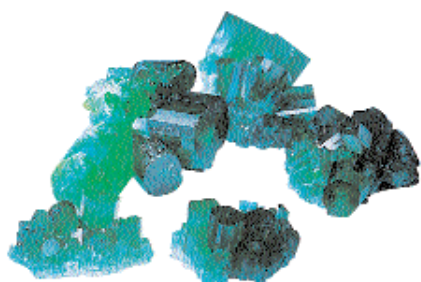
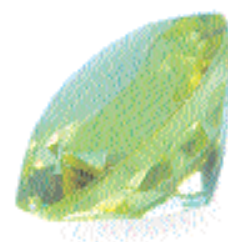
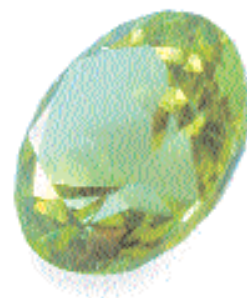


# Slow Ramp Kiln Tests

Kiln was ramped 260° per hour to a firing temperature of 600°C and held at 600°C for 30 minutes.

Gemstone type	stone only	in PMC3	Guide
	600°C/30min	600°C/30 min	
Tanzanite	survived	survived	good bet
Green Topaz	survived	survived	good bet
White Topaz	survived	survived	good bet
Green Tourmaline	survived	survived	good bet
Labradorite	survived	survived	iffy
Rainbow Moonstone	damaged	damaged	iffy
Aquamarine	survived	damaged	iffy
Silver Moonstone	slight damage	slight damage	iffy
Peach Moonstone	slight damage	slight damage	iffy
Blue Goldstone	damaged	not tried	unsafe
Brown Goldstone	damaged	not tried	unsafe
Smoky Quartz	damaged	not tried	unsafe
Amethyst	damaged	not tried	unsafe
Citrine	damaged	not tried	unsafe
Rainbow Topaz	damaged	damaged	unsafe
Pink Tourmaline	damaged	not tried	unsafe



## Butane Torch Tests

### Natural Gemstones

Gemstone type	in PMC3	Guide
	600°C/three min	
Rhodolite	survived	good bet
Peridot	survived	good bet
Blue Sapphire (A-Grade)	survived	good bet
Blue Sapphire (AAA-Grade)	survived	good bet
White Sapphire	survived	good bet
Ruby (A-Grade)	survived	good bet
Ruby (AAA-Grade)	survived	good bet
Tanzanite	survived	good bet
Peach Moonstone	damaged	unsafe
Silver Moonstone	damaged	unsafe
Labradorite	damaged	unsafe

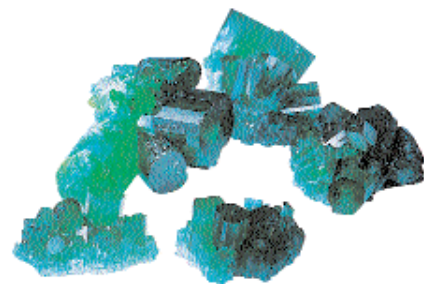
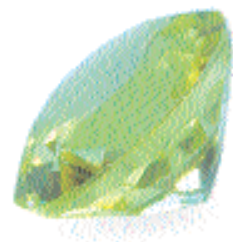
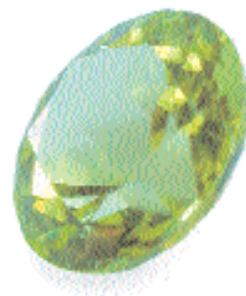
### Lab-Grown Gemstones

Gemstone type	in PMC3	Guide
	600°C/three min	
Blue Spinel	survived	good bet
White Sapphire	survived	good bet
White CZ	survived	good bet
Green Garnet	survived	good bet
Green CZ	damaged	unsafe
Moissanite	damaged	unsafe

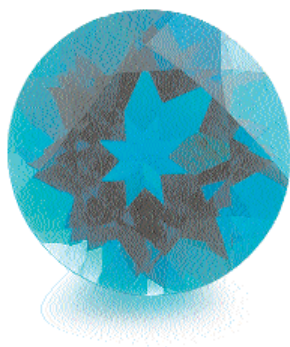


## Natural Gemstone Tests (fast ramp)

Gemstone type	stone only 600°C/30min	in PMC3 600°C/30 min	Guide
Chrome Diopside	not tried	survived	good bet
Almandine Garnet	survived	survived	good bet
Pyrope Garnet	survived	survived	good bet
Rhodolite Garnet	survived	survived	good bet
Tsavorite Garnet	not tried	survived	good bet
Hematite	not tried	survived	good bet
Moonstone	survived	survived	good bet
Peridot	survived	survived	good bet
Black Star Sapphire	survived	survived	good bet
Tourmaline	survived	damaged	iffy
Denim Lapis	survived	survived	iffy
Lapis Lazuli—Dark	damaged	not tried	iffy
Agate (Cameo)	damaged	not tried	unsafe
Amethyst	destroyed	not tried	unsafe
Aquamarine	not tried	damaged	unsafe
Aventurine	damaged	not tried	unsafe
Carnelian	damaged	not tried	unsafe
Blue Mist Chalcedony	damaged	not tried	unsafe
Citrine	damaged	not tried	unsafe
Iolite	destroyed	not tried	unsafe
Jadeite	damaged	not tried	unsafe
Malachite	destroyed	not tried	unsafe
Mexican Fire Opal	not tried	damaged	unsafe
Black Onyx	damaged	damaged	unsafe
Rhodochrosite	damaged	not tried	unsafe
Rose Quartz	destroyed	not tried	unsafe
Tiger's Eye	darkened	not tried	unsafe
Blue Topaz	destroyed	not tried	unsafe
Turquoise	destroyed	not tried	unsafe



## Synthetic Gemstone Tests (fast ramp)



Gemstone type	in PMC3 600°C/30 min	Guide
Alexandrite	survived	good bet
CZ	survived	good bet
Emerald	survived	good bet
Ruby	survived	good bet
Sapphire	survived	good bet
Spinel	survived	good bet
Tavalite CZ	survived	iffy
Star Corundum	survived	iffy

by Kevin Whitmore, Rio Grande